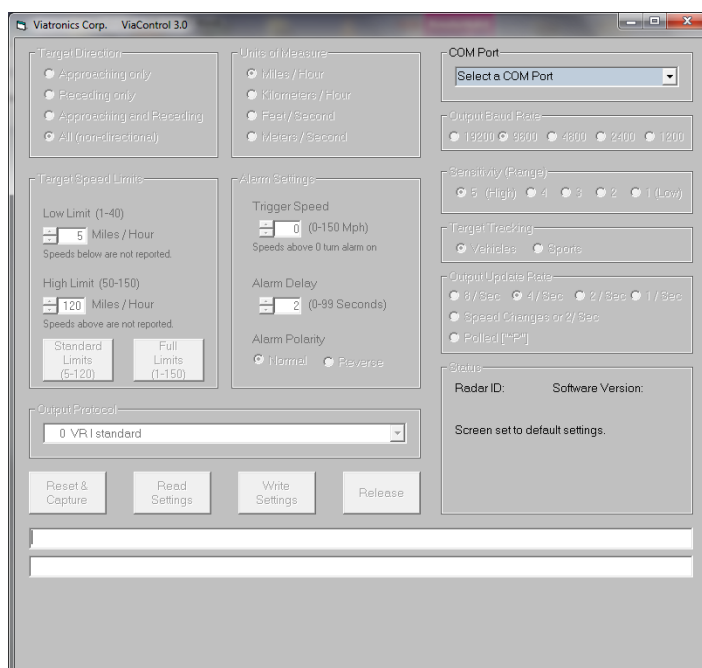




The ViaRadar™ is designed for maximum flexibility and ease of use. Small size and extremely low current consumption are perfect for OEM applications.

The ViaRadar™ includes software that allows the user to quickly program the unit in multiple configurations. Simply apply power and the Via-Radar will provide speed data with a configurable RS 232 signal.

- **Revolutionary low power design - dramatically improves battery life consuming 1/3 power of competing radar units.**
- **Smallest radar in the industry – only 10 cm x 10 cm x 5,5 cm allowing you to easily mount the unit inside your equipment.**
- **IP66 classified housing provides protection from weather.**
- Digital Signal Processing (DSP) directional radar – track target direction of approaching, receding or both.
- Target modes
 - Vehicle tracking - provides longer tracking history with a 2 second target hang time.
 - Sports tracking – allows quick acquisition time and only a 1/2 second target hang time.





VIARADAR™ TECHNICAL SPECIFICATIONS

PROGRAMMABLE FUNCTIONS

- ✓ Adjustable range / sensitivity – program the radar sensitivity with 5 different settings.
- ✓ Adjustable Speed Range, Down to 1 KPH/MPH
- ✓ Selectable Units of Measure
- ✓ Selectable Target Direction
- ✓ Adjustable Output Rates
- ✓ Adjustable Baud Rates

MICROWAVE SPECIFICATIONS

Frequency:	24.125+.1 GHz (K-Band)
Beam width:	12° Horizontal
Output Power (EIRP):	<20dBm
Microwave Source:	DRO or PHEMT
Antenna Type:	Planar Array
Polarization:	Linear
Receiver Type	Dual Channel Low-Noise

GENERAL SPECIFICATIONS

Environmental:	-30°C to +65°C
Units of Measure:	User Selectable (MPH, KPH, FT/sec., MT/sec.) Tenths Available Also
Target Speed Limits:	User selectable from 1 - 240 KPH / 1 - 150 MPH
Accuracy:	+/- 1 MPH or KPH
Adjustable Speed Range:	Down to 1 mph (1 km/h)
Adjustable Sensitivity Levels:	5 different settings
Signal processing:	Digital
Directionality:	Track target direction of approaching, receding or both.

POWER

Supply Voltage Range:	7.4 - 24.0 VDC (12.6 VDC nominal)
Supply Current	<100ma. @ 12.6 VDC

WEIGHT & DIMENSIONS

Weight:	400g.
Size:	10 cm (Height) 10 cm (Length) 5,5 cm (Width)
IP-Classification	IP66

COMMUNICATION SPECIFICATIONS

Connection:	RS-232
Byte Format:	One start bit, 8 data bits, no parity bit, and one stop bit.
Output Baud Rate:	19200, 9600, 4800, 2400, or 1200 8, 4, 2 or 1 time per second, Upon speed change or every 2 seconds.
Output Update Rate:	8, 4, 2 or 1 time per second, Upon speed change or every 2 seconds.
Output Protocols:	HEX or ASCII format.
Alarm Output:	Open-collector Alarm output line. Tied into the Target Speed Low-Limit setting. The Alarm output line will pull low when a target speed is greater than 5 times the Target Speed Low-Level setting.



"WHEN ONLY THE BEST IS GOOD ENOUGH..."